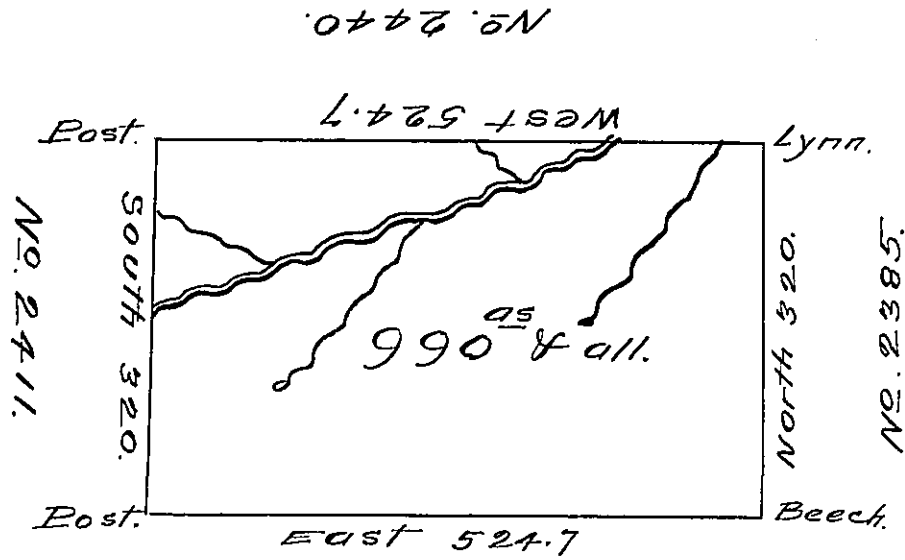


No. 12.



No. 2417.

Situate about one half Mile West of Canada Creek and eighteen Miles South of the State Line in North<sup>d</sup>. County containing 990 Acres and the usual allowance for Roads &c.

Surveyed July 18<sup>th</sup>. 1793 for Wilhem Willink Nicolas Van Staphorst Christiaan Van Eighen Hendrick Vollenhoven and Rutger San Schemmels-penninckin persuance of a Warrant No 2330 - bearing date Decemb. 12<sup>th</sup>. 1792.

John Caran D.S.

Daniel Brodhead Esq. S.G.

IN TESTIMONY that the above is a copy of the original remaining on file in the Department of Internal Affairs of Pennsylvania, made conformably to an Act of Assembly approved the 16th day of February 1833, I have hereunto set my hand and caused the Seal of said Department to be affixed at Harrisburg, this fourteenth day of August 1907.

*Henry Howard*  
Secretary of Internal Affairs.